



## **Rabbit anti JAK2 (Paired Y1007/1008) Polyclonal Antibody**

**Alternative Name(s): Janus kinase 2**

### **Order Information**

- **Description:** JAK2 (Paired Y1007/1008)
- **Catalogue:** 601-670
- **Lot:** See label
- **Size:** 100ug/200ul
- **Host:** Rabbit
- **Clone:** nan
- **Application:** IHC(P), WB
- **Reactivity:** Hu

### **ANTIGEN PREPARATION**

A synthetic peptide surrounding to the epitope -EYYK- without any phosphorylation of JAK2 protein from human, mouse and rat origins .

### **BACKGROUND**

The Janus tyrosine kinase family is consists of four members, JAK1, JAK2, JAK3 and Tyk2. Upon the cytokine ligand binding to its the receptors, the dimerization of the receptors occurs followed by phosphorylation of the receptors. The phosphorylation of receptors recruits the tyrosine kinase physically associated to the dimerized receptors, and the phosphorylate the kinase, thus activates the signal transducer and activator of thanscription (STAT1, 3, 5) and the other signal proteins.

### **PURIFICATION**

The Rabbit IgG is purified by Epitope Affinity Purification

### **FORMULATION**

This affinity purified antibody is supplied in sterile Phosphatebuffered saline (pH7.2) containing antibody stabilizer

### **SPECIFICITY**

This antibody recognizes JAK2 without phosphorylated sites of Tyr1007/1008. It does not cross-react with phosphospecific peptide.

### **STORAGE**

The antibodies are stable for 24 months from date of receipt when stored at -20oC to -70oC. The antibodies can be stored at 2oC-8oC for three month without detectable loss of activity. Avoid repeated freezing-thawing cycles.

### **APPLICATIONS/SUGGESTED WORKING DILUTIONS\***

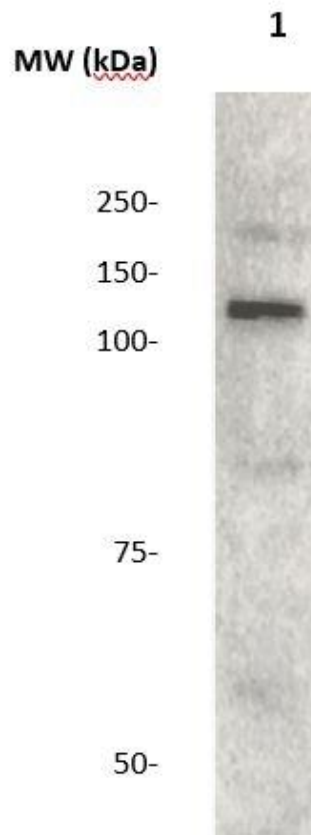
- Western Blot: 0.1-1 µg/ml
- ELISA: 0.01-0.1 µg/ml
- Immunoprecipitation: 2-5 µg/ml
- IHC: 2-10 µg/ml
- Flow cytometry: Not tested
- Molecular Weight: 42.5
- Positive Control: Kidney Tissue
- Cellular Location: Cell Membrane

\*Optimal dilutions should be determined by researchers for the specific applications.

### **FOR RESEARCH USE ONLY.**

AbboMax, Inc 2528 Qume Drive, Suite 8, San Jose, California 95131, USA  
1 408-573-1898 (Tel). 1 408-573-1858 (Fax). [www.abbomax.com](http://www.abbomax.com) [info@abbomax.com](mailto:info@abbomax.com)

## DATA ATTACHMENTS



Western Blot: The whole lysate derived from Hela (20 ug/lane) immunoblotted by Rabbit anti – JAK2(Paired Y1007) antibody (Cat#601-670) at 1:500. Observed a major immunoreactive band at molecular weight ~120kDa.

## REFERENCES

### FOR RESEARCH USE ONLY.

AbboMax, Inc 2528 Qume Drive, Suite 8, San Jose, California 95131, USA  
1 408-573-1898 (Tel). 1 408-573-1858 (Fax). [www.abbomax.com](http://www.abbomax.com) [info@abbomax.com](mailto:info@abbomax.com)